



TAPMI
(A constituent unit of MAHE, Manipal)



TAPMI Summer

Internship 2023

(Batch 2022-2024)



TAPMI
(A constituent unit of MAHE, Manipal)



Internships at TAPMI for the Batch 2022-24 concluded on 8th March 2023 and 100% PGP 1 students have been placed. We have placed a total of 500 students across the five programs. The details are presented below:

The first year (PGP-1) of Batch 2022-2024 consist of 532 students spread across four programs: MBA(Core) - 381 students, MBA(BKFS) - 52 students, MBA(HRM) - 50 students, MBA(MKT) - 27 students & MBA(IB) -22 students. Of the 532 students, 32 students opted to self-source their internships and the remaining 500 were placed by the Institute.

The detailed analysis of Internship 2023 process is provided below.





TAPMI
(A constituent unit of MAHE, Manipal)



Student Statistics

No. of
students
across all
programs
(Batch
2022-2024)

532

No. of
students
opted to
self-source
Internships

32

Internship assistance from the Institute

No. of
students
seeking
assistance

500

No. of
students
placed

500

Placement (%)

100%





TAPMI
(A constituent unit of MAHE, Manipal)



Average and Highest Stipend

(Across all programs)

Stipend Details

INR per month

Average Stipend

INR 33,597

Highest Stipend

INR 125,000





TAPMI
(A constituent unit of MAHE, Manipal)



Key Recruiters for Internships

 EY Building a better working world	25	JPMorganChase 	21	 HAVELLS	18	Deloitte.	18	 HDFC BANK	11	 TATA CAPITAL	10	 ITC Limited	08	 Tally POWER OF SIMPLICITY	07
 hp	06	Capgemini 	06	 OPTIV	05	 vlinder	05	 ZE	05	VOLVO Volvo Group	04	 WELLS FARGO	04	 TATA MOTORS	04
 citi	04	 GEP	04	 LARSEN & TOUBRO	04	 CAMBRIDGE UNIVERSITY PRESS & ASSESSMENT	03	 DELL	03	 DXC TECHNOLOGY	03	 FUJITSU	03	 LUXAIRE® Luxury · Revolution	03
 PRIMACY DELIVERING BRILLIANCE	03	 salesforce	03	 Arcesium®	02	 BAJAJ FINSERV	02	 CGI	02	 Lilly	02	 HSBC	02	 MOSSADAMS	02
 Optum	02	 SBICAPS Complete Investment Banking Solutions	02	 SYMEGA POSSIBILITIES UNLIMITED	02	 TTK SERVICES Private Limited	02	 vivriti CAPITAL	02	 CRISIL An S&P Global Company	01	 Dabur	01	 Littler®	01
 Licious™ BORN TO MEAT	01	 Nestlé	01	 PORTER — good for goods —	01	 S&P SWOT & PESTLE.com	01	 syngenta	01	 VLP	01				






TAPMI
(A constituent unit of MAHE, Manipal)



Internships – Sectoral view



Sector	No. of Companies	No. of students placed
Financial Services	40	112
ITES & IT Consulting	28	80
Business Consulting	20	58
Professional Services	10	47
Education & E-Learning	07	34
Manufacturing	08	33
FMCG & Consumer Goods	13	26
Investment Management	05	22
Marketing Services	10	21
Automobile	05	15
Banking	03	14
Real Estate & Construction	04	13



TAPMI
(A constituent unit of MAHE, Manipal)



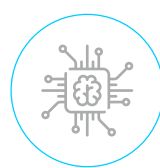
Internships – Sectoral view ►



Sector	No. of Companies	No. of students placed
Computer Networks – Security & Products	03	11
Publishing	02	10
Healthcare	03	09
Human Resource Services	03	06
Capital Markets	02	05
Business Operations & Supply Chain	04	05
Warehousing & Storage	01	03
Imports & Exports	01	02
Pharmaceuticals	01	02
Energy	02	02
Agriculture	01	01
Analytics	01	01
Total		532



TAPMI
(A constituent unit of MAHE, Manipal)



Internships – Profiles offered

Profile

- Risk & Financial Advisory Internship Intern
- Human Capital (Transformation) Intern
- HR Intern
- CPRA-IRM Intern
- Credit Analyst Intern
- ICG Analytics Intern
- C Suite Intern
- Business Development Intern
- Program Management Intern
- Financial Analyst Intern

- Corporate Analyst Development Analyst
- Enterprise Risk Intern
- Tech Risk Intern
- Marketing Intern
- Global Finance & Business Management Analyst Program Intern
- Research and Investment Services Intern
- Business Service Intern
- Financial Analyst Intern
- Project Advisory & Structured Finance



TAPMI
(A constituent unit of MAHE, Manipal)



Internships – Profiles offered

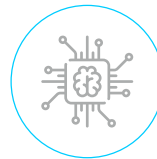
Profile

- DMI Intern
- Area Manager Intern
- Business Service Intern
- Financial Analyst Intern
- Digital Marketing Intern
- Equity Research Intern
- Enterprise Sales Associate
- Wealth Management Intern
- Retail Finance Intern
- Corporate Finance Intern

- Brand and Marketing Intern
- Growth Hacker Intern
- Customer Survey Intern
- Operations Intern
- Social Media Marketing Intern
- Foreign Market Research Intern
- Private Wealth management Intern
- PMS Operations Intern
- Insurance and Mutual fund Intern
- Technical Recruiter



TAPMI
(A constituent unit of MAHE, Manipal)



Internships – Profiles offered

Profile

- SOC Associate
- Business Transformation Management Trainee
- Financial Planner Intern
- Portfolio Monitoring Intern
- Investment Advisory Intern
- Marketing Content Writer
- International Business Intern
- Data Analyst Associate
- Management Planner

- Creative Intern
- Logistics Intern
- E-commerce Intern
- Supply Chain Intern
- Talent Acquisition Intern
- Quantitative Trading Intern
- Executive Operations Intern



TAPMI
(A constituent unit of MAHE, Manipal)



Key Highlights



We have achieved 100% internships this academic year by placing all 500 students who sought internships through the Institute (32 students opted for self-sourcing their internships).

While the highest stipend of INR 125,000 per month was offered to two students by Bajaj Finserv, 11 students received stipend of INR 120000 by HDFC Bank.

Bajaj Finserv followed by HDFC Bank, JPMC, Optiv, TITAN, Tresvista, GEP, Optum, VIP Industries and Nestle are the top ten recruiters by stipend.



TAPMI
(A constituent unit of MAHE, Manipal)



Corporate Engagement Team



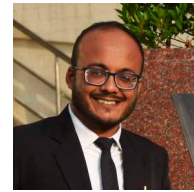
Abhijeet Chakraborty



Abhishek Sahu



Archie Upadhyay



Arpit Jain



Bipasha Sarkar



Chaitanya Hedge



Dikshant Khandelwal



Mandavi



Gokul V U



Hetul Parikh



Kartik Anand



Kavita Chauhan



Lipika Binani



M Bhanu Prasad



Nachiket Tripathy



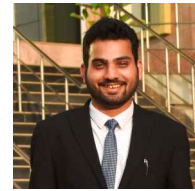
Narottam Singh



Piyush Sunil Joshi



Pranav Shete



Praveen Kumar Dash



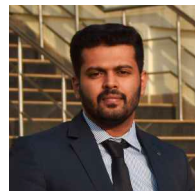
Priyanka Charde



Priyasree S



Raghav Chawla



Rahul Raghav



Raj Roshni



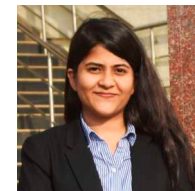
Ravi Nishanth



Rishikaa Agarwal



Sabyasachi Roy



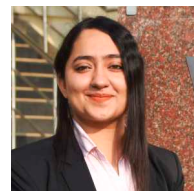
Sailaza Satpathy



Sakshi Mishra



Sambit Patro



Simran Kaur



Vaibhav Rana



Yash Kulkarni





TAPMI
(A constituent unit of MAHE, Manipal)



ASSOCIATION
OF
AMBA
ACCREDITED



www.tapmi.edu.in

   /mytapmi